



Teamcenter eNews

SIEMENS
TEAMCENTER

Siemens PLM Software

Issue 1

Siemens PLM Software Transforming the Process of Innovation

"PLM is a new paradigm for manufacturing companies. As its name implies, Product Lifecycle Management allows companies to manage their products across their lifecycles - from the earliest idea for a product all the way through to the end of its life. This is one of the most important activities in any manufacturing company." -

From the book **Product Lifecycle Management** by author John Stark - ISBN 978-1-85233-810-7

Definition

Product Lifecycle Management / Product Data Management

PLM is the practice of efficiently managing the development and configuration of the product definition throughout a product's lifecycle.

- **(Product Life cycle Management) PLM is...** An enterprise business strategy for product data management (PDM) throughout its lifecycle - supported by a suite of tools.

A comprehensive information system that coordinates all aspects of a product from initial concept to its eventual retirement. Sometimes called the "digital backbone" of a product, it includes the requirements phase, analysis and design stages, manufacturing, product launch, distribution, quality assurance, in-service maintenance and spare parts provisions.

- **(Product Data Management) PDM is...**One of the most important components of PLM - a **subset of tools** to vault and manage data related to the engineering product structure.

An information system used to manage the data for a product as it passes from engineering to manufacturing. The data includes plans, geometric models, CAD drawings, images, NC programs as well as all related project data, notes and documents. A PDM also manages the interrelationships between the data so that when changes are made to one database, the effects are highlighted in the others. PDM is developed for workgroups as well as the entire enterprise.

The terms PLM and PDM (product data management) are sometimes used interchangeably; however, PDM is typically only the data handling component of PLM. PLM also interfaces to the CRM and ERP systems within a company, which support the customer relationships, supply chain management and accounting.

CTH Systems Inc will be periodically hosting PDM101 workshops throughout 2009. The workshops will be a four hour seminar at CTH Systems focusing on educating customers with PDM. This will not be a product seminar.

Please email enquiry@cthsystems.com if you would like to be notified of upcoming seminars.

If you wish to add anyone to the e-News list please do so by clicking the following link:

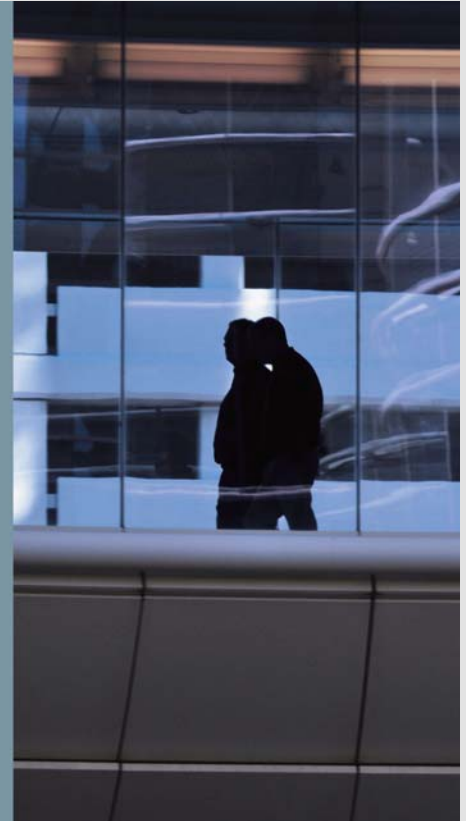
SUBSCRIBE

Quick Information Lookup

- PLM - Plan, Define, Build, and Support
- Delivering Value Across Industries - A look at the different industries that have already adopted the PLM technology
- Managing Data from Engineering to Manufacturing
- PDM Solution: Teamcenter Express
- PDM Solution: Modules

How do I deliver
more innovations to
market faster, with
scarce resources?

Product Lifecycle Management (PLM) is an essential element in effectively creating and utilizing Global Innovation Networks, as it empowers businesses to make unified, information-driven decisions at every stage (plan, define, build and support) in the product lifecycle.



Plan

Early stages of product lifecycle influence up to 80 percent of your product costs. Our planning solutions provide the ability to rapidly configure and design new products that maximize reuse in order to reduce cost.

Develop

Siemens PLM Software provides companies the ability to design and deliver innovative products to market faster than their competitors, test and validate product designs cost-effectively, respond quickly to engineering design changes, develop partnerships with teammates in different organizations, using different systems and processes.

Execute

The execution phase of the product lifecycle is more complex, less structured and less automated than other phases. Technology solutions in this phase are typically "silos," encompassing such disciplines as quality validation, process improvement, plant design, resource management and manufacturing simulation.

Support

The release of a product may be the end of the development cycle, but it's only the beginning in terms of the customer's user experience. For the people who develop, deliver and support those products, it's essential to consider the user experience in every phase of the product lifecycle.



51,000 Customers Operating 5.5M Seats Across the Globe

AEROSPACE DEFENSE	AUTOMOTIVE TRANSPORT	MACHINERY EQUIPMENT	HIGH TECH ELECTRONICS	CPG RETAIL MEDICAL

More companies trust Teamcenter to manage product knowledge

- over 5,000,000 licenses and 7X the closest competitor

Customers have confidence in Siemens PLM Software to protect their product lifecycle management investments

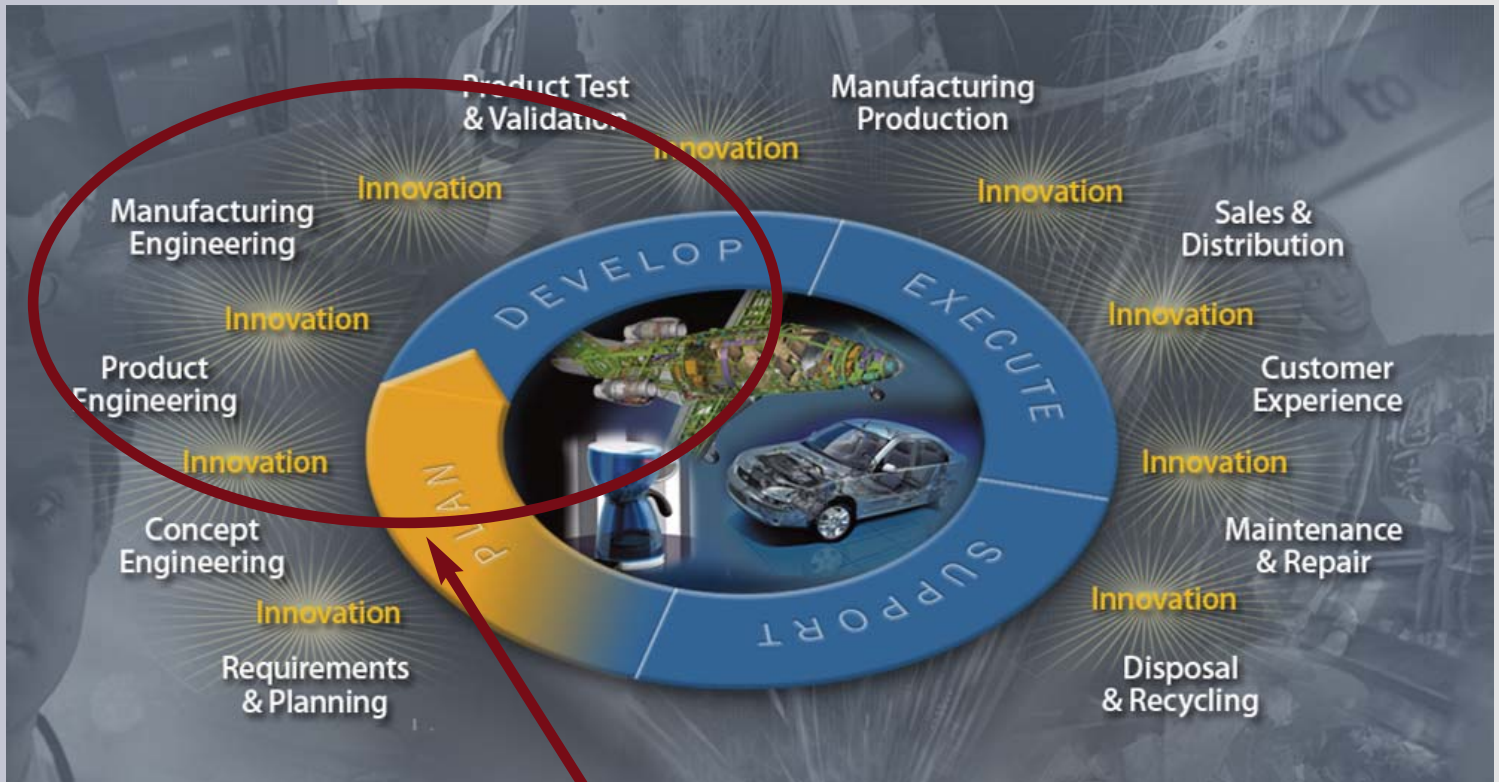
- 51,000 customers in 62 countries
- top 100 customers – average of 17 years with Siemens

In addition to delivering value across the product lifecycle, Siemens PLM Software has attained a strong record of delivering real business value to companies across a wide range of industries.

IWC - Switzerland “With Teamcenter Express, it is now much easier to find existing product data. ‘A complex search happens very quickly, so people really use this functionality,’ Weibel adds, ‘This means they are less likely to recreate existing information.’ Another Important benefit of Teamcenter Express comes from how it allows IWC to leverage existing watch design expertise in the development of new products. For example, previously defined values are linked to items in the product structure so that many of the decisions designers must make are already made for them. This kind of knowledge database helps the company ensure quality as it adds to its design staff during this time of growth.”

Schatti - Switzerland “One and One are more than Two. Schatti’s two factories work closely together collaborating on the production of many items. For example, parts for an oven hinge are made in Schwanden and then trucked to Plovidiv for assembly. Schatti is using Teamcenter Express collaborative product data management solution from Siemens to strengthen the integration between the two facilities. Teamcenter Express allows both locations to share a common database of product information.”

Product Lifecycle Management



Product Data Management

Internal challenges also to be faced -- do any of these sound familiar to you?

- How can we increase innovation in our engineering-manufacturing teams and enable them to work together more effectively?
- How can we improve our product launch timings and improve quality, while reducing overall development costs?
- How can we improve our ability to initiate and execute Change Orders?
- How can we improve collaboration internally and across our geographically dispersed design-manufacturing locations ?
- How can we overcome physical and logical barriers to improved communications, while synchronizing the activities of our Engineering and Production groups?
- How can we improve our estimating procedures and enhance our ability to locate and re-use previous designs?

PDM/PLM solutions can help with the many challenges faced by your company with a focus on managing everyday tasks and processes for small and mid-size manufacturing organizations across all industries.

Feature and Benefits:

- Analyze and roll-up multi sourced material and substance information directly from Bill of Materials and reports using standard mandated formats
- Solid foundation for information management
- Wide range of business process visibility and enforcement capabilities
- Executive management awareness and control capabilities
- Tailored compliance solutions

Who is TeamCenter Express® designed for?

TeamCenter Express addresses the needs of small and mid-size manufacturing organizations where you:

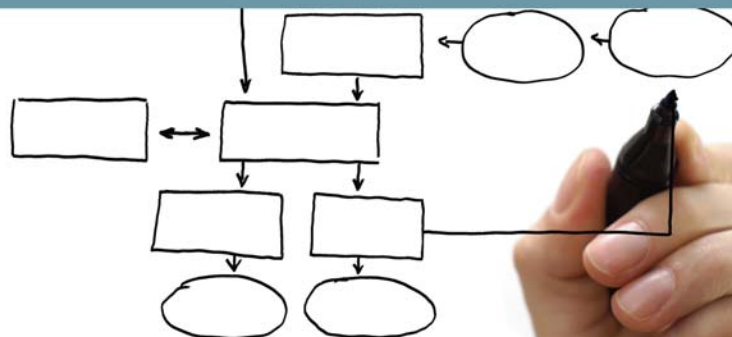
- Are experiencing a rapid explosion of engineering data
- Need to improve the efficiency of your design, manufacturing planning and engineering change processes
- Are migrating from a 2D to a 3D CAD environment
- Use NX® software, Solid Edge® software or non-Siemens CAD systems including Pro/E, Catia, SolidWorks, Inventor or AutoCAD
- Need to maximize your re-use of proven components
- Need more efficient collaboration between departments and with external suppliers and customers
- Need a more reliable method for transferring data to your ERP system
- Use Microsoft Windows and associated Microsoft products for a common user environment
- Have limited IT and training resources
- Need a growth path for advanced capabilities – scalability with built-in data protection
- Are concerned about the cost of implementing and maintaining a cPDM system

What benefits can I expect from implementing TeamCenter Express®?

Organizations using TeamCenter Express benefit from:

- Rapid deployment of a full-featured PDM solution that provides a single source of engineering data
- Securing your corporate design data while facilitating access by authorized personnel
- Faster, more efficient and more consistent new product development process
- Increasing design re-use, facilitated by a powerful and flexible search capability
- A more successful move from 2D to 3D CAD
- Streamlining your design-through-manufacturing processes with electronic workflows for development release, product release and engineering change orders
- Error reduction through managed design review processes across multiple departments and with external suppliers and customers
- Elimination of mistake-prone manual transfer of data to manufacturing and ERP
- Low total cost of ownership

How do I manage my engineering data and processes more efficiently with my limited IT Resources?

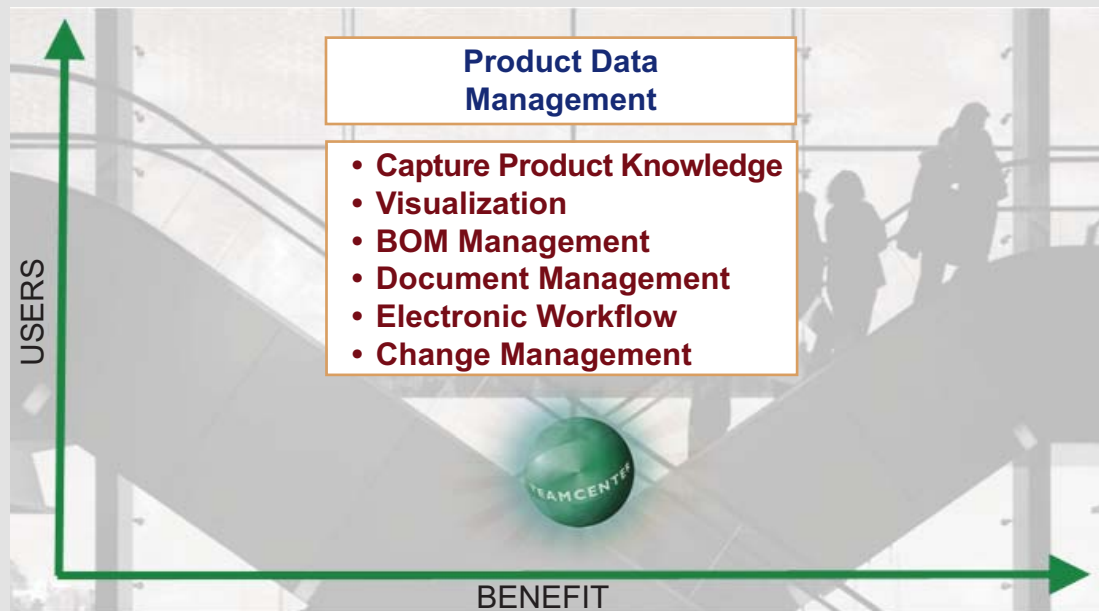


“As companies come under increasing competitive pressure, they are required to reduce lead times, reduce costs and increase quality.”

From the book **Product Lifecycle Management** by author John Stark - ISBN 978-1-85233-810-7

Product Data Management (PDM) systems are one of the most important parts of a PLM System. The PDM solution manages product information and product workflow.

A PDM system works with a large number of currently unresolved issues within the managing of product information. CTH Systems has chosen the Siemens solution of Teamcenter to address the day to day challenges surrounding these issues.



Teamcenter Express Core Modules

Capture Product Knowledge Teamcenter Express has excellent multi-CAD capability including integrations with the most commonly used CAD systems. Teamcenter Express also has the ability to incorporate data from different CAD systems in a single assembly structure. These integrations include NX, Solid Edge, NX I-deas Series, Catia V5, SolidWorks, Pro/E, AutoCAD and Inventor. The resulting benefits include the ability to manage CAD data from customers, suppliers and acquisitions and enable common processes across different CAD systems and facilitates CAD transition strategies.

Visualization: Teamcenter Express incorporates Teamcenter Visualization – the best-in-class solution for visualization, collaboration and design review using .JT and a large number of other 2D and 3D file formats.

BOM Management: Enables product configurations to be managed and BOMs to be created and shared early in the process for managed re-use and improved accuracy ('create once, use many').

Document Management: Teamcenter Express includes comprehensive capabilities for management of technical documentation in a wide variety of file formats, including a comprehensive Microsoft Office integration. The resulting benefits include a direct integration with the user's desktop where more users can contribute to and work from the single source of data for design-through-manufacturing.

Electronic Workflow: Leveraging experience from many hundreds of implementations, the Teamcenter Express team has incorporated a standard set of best in class workflows that cover all of the typical process needs of mid-sized organizations.

Change Management: Teamcenter Express delivers the following preconfigured elements to provide an entry-level engineering change capability.

- An "Engineering Order" process that include change request and change order steps
- An "Engineering Order" item that includes Request form, Engineering Order form and folders for associated data

The Teamcenter eNews will be distributed quarterly. If you wish to subscribe anyone to our list, please [email your request](#) along with the persons email address.

We will be looking further into the various modules Teamcenter Express has to offer for this PDM solution in our upcoming newsletters.