

CTH Systems quarterly newsletter is now going to an eNews format for distribution.

If you wish to add anyone to this eNews list please do so by clicking the following link:

[SUBSCRIBE](#)

Quick Information Lookup

- **FRG** - FLeXS Report Generator
- **EFM Starter II** - Electronic Flow Metering
- **Cimrex Replacement** - EXTER products
- **CTH Systems Support Process** - Outlined
- **Latest Software Versions** - All Products

Upcoming Training

FactoryLink 8.0

June 22-26, 2009 @ CTH
Registration Deadline May 29, 2009

ACE3600

September 21-24, 2009 @ Vancouver - Executive Inn, Burnaby
Registration Deadline August 28, 2009

BCWWA - Annual Conference and Trade Show

CTH Systems Inc is pleased to once again be apart of the annual BCWWA tradeshow and conference.

April 26 - 29, 2009

Penticton Trade and Convention Center, Penticton BC

Dan Ehrenreich, Motorola Inc, will be presenting a paper on
Integration of Advanced Control over Water System Operation
on Monday April 26 at 8:05am: Session 6: Zinfandel Room



For more information on the BCWWA Conference, please visit their website.

http://www.bcwwa.org/annual_conference/index.php

P163 - FLeXS Report Generator (FRG)

The FRG is a utility which provides an effective method for generating reports for a FactoryLink system. The key advantage of FRG over all previous report generators is the fact that it can take data from both the FactoryLink Real Time Database (RTDB) and from the SQL database where historical production data is typically stored.

How to get the most from FRG

While FRG can be used with FactoryLink alone, it is highly recommended that the SCADA system also use the FLeXS Communication Engine (FCE). Together the FCE and FRG FactoryLink tasks provide a tool set which allows for easier reporting of Electronic Flow Measurement (EFM) data than ever before. The FRG task has been designed especially for the natural gas EFM industry but can also be applied to other industries.

Minimum Hardware Requirements

- CPU: Pentium 500
- CD-Rom drive for installation
- 128MB RAM
- X VGA monitor and graphics processor (1024 X 768, with at least 65K colours)
- Windows compatible mouse and keyboard
- Hard Drive Space: 1.0 – 2.0 GB – depending on how much historical data is preserved

EFM Starter II - Electronic Flow Metering

Available May 2009

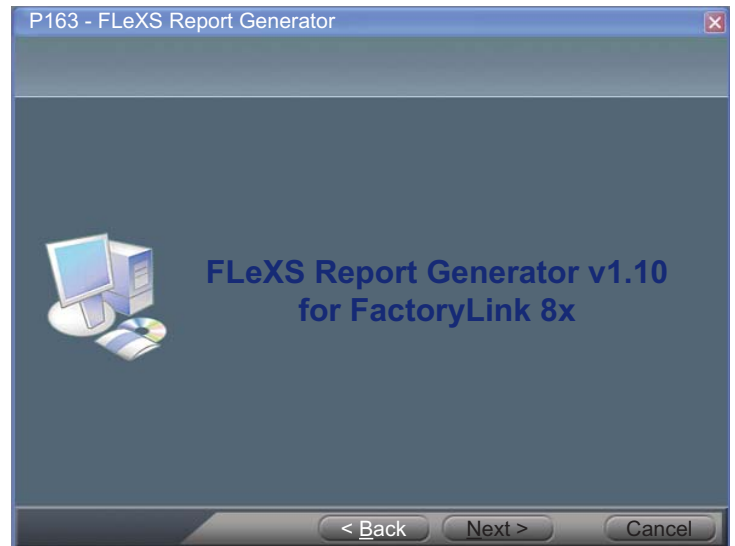
The EFMStarterII FactoryLink application developed by CTH Systems Inc was designed to be a base application which can either be used as-is or can be extended or modified to create your own application.

The EFMStarterII showcases the add-on modules developed by CTH Systems Inc. to extend functionality and in many cases, simplify extending the application to other sites. Some of the modules that it uses are:

- FLeXS Communication Engine Driver,
- FLeXS Trending,
- FLeXS Report Generation,
- FLeXS To Database Tool,
- Custom AGA Screen with Database support.

In addition to these modules, the EFMStarterII application uses symbols extensively to manage the user interface for enabling/disabling features and simplify adding sites.

In summary, this application provides a head-start in developing applications in FactoryLink 8.0.1, allowing you to complete your project much more quickly and built upon a field-proven foundation.



Minimum Software Requirements

- TCP/IP network protocol
- Microsoft Windows 2000 or Microsoft Windows XP
**Note Windows Vista is not supported*
- Internet Explorer 6.0
- Adobe Acrobat 4.05 or higher (for viewing documentation)
- SQL 2000 SP3 installed for ODBC SQL logging
- FactoryLink v 7.5 or higher

Final Discontinuation of Cimrex Panels

When introduced to the market, CIMREX was the world's first operator panel with web server functionality. Today, more than 100,000 CIMREX panels are in use all over the world, appreciated for their flexibility and ease of use.

Today, this product line has been replaced by the EXTER series – intuitive operator panels that combine elegant design with cutting-edge technology.

Last Time Buy - October 31, 2009

The remaining Cimrex Panels will no longer be available for purchase after October 31, 2009. Please see below for a list of replacement products.

Cimrex 5: Suggested Replacement - H-T40-S/P
Cimrex 10: Suggested Replacement - Exter K10m
Cimrex 12: Suggested Replacement - Exter K10m
Cimrex 20: Suggested Replacement - Exter K20m

[Beijer Panel Selector](#) - Interactive selection tool to help you find the right operator panel for your needs or simply browse the company's extensive range of operator panels.

More Information on Beijers Panels

EXTER K10 operator panel

[Technical data for EXTER K10m](#)

Graphic Keypad operator terminal. 160x32 pixels, Backlit black and white LCD display. RS232, RS422/RS485. 24 VDC power supply.



With 160 x 32 pixels, the monochrome display provides an efficient interface for presentation of textual data and simpler graphics. The 4-color front foil print enhances the look and feel of the operator panel, and helps in guiding the operator's hand and eye. The lines from function keys to the display help the eye make the connection from function key to the object on the screen. The integrated function key, text strip and LED is easy to use and understand as one unit. Digits are conveniently arranged to match the position on a PC numeric keyboard.

EXTER K20 operator panel

[Technical Data for Exter K20m](#)

Graphic Keypad operator terminal. 240x64 pixels, Backlit black and white LCD display. RS232, RS422/RS485. 24 VDC power supply.



With 240 x 64 pixels, the monochrome display provides an efficient interface for presentation of textual data and simpler graphics. The 4-color front foil print enhances the look and feel of the operator panel, and helps in guiding the operator's hand and eye. The lines from function keys to the display help the eye make the connection from function key to the object on the screen. The integrated function key, text strip and LED is easy to use and understand as one unit. Digits are conveniently arranged to match the position on a PC numeric keyboard.

H-T40m operator panel

[Technical data for H-T40m-S](#)

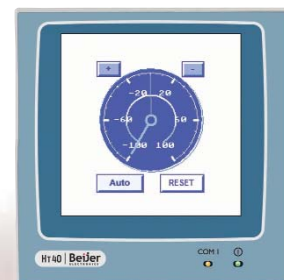
[Technical data for H-T40m-P](#)

H-T40m has a 3.5" graphic touchscreen display with 16 shades of gray and a resolution of 240x240 pixels. There is one communication port supporting RS232, RS422 and RS485.

The front enclosure is IP65 classified, which means that it is protected against low pressure water jets from any direction. The operator panel is configured with the intuitive software tool H-Designer.

H-T40m is available in Standard (S) and Plus (P) versions.

*CUL as of July 2009



CTH Support Process

CTH Systems Inc. Technical and Commercial SUPPORT

The support desk is open 8:00am to 4:30pm MST Monday through Friday.

P: 403.259.7431

E: support@cthsystems.com

W: www.cthsystems.com

Calls should be logged within two hours and a case number assigned and emailed to the customer. The person assigned to your case will be in contact with you based on a first come, first served and priority basis.

FactoryLink:

FactoryLink support is provided at no charge to customers who have purchased annual support (CSS). The license with the issue must be one supported for in order to have your support call logged under your CSS agreement. FactoryLink issues that do not have a current CSS agreement in place will be charged out at an hourly support rate.

CTH current support rate is billed in increments of 30 minutes. A minimum one hour charge will apply.

Motorola:

All support calls made for Motorola covered at no charge. This does not include any application work or development.

Beijer HMIs:

All support calls made for Beijer covered at no charge. This does not include any application work or development.

Returns/Repairs:

Customers in need of repairs must contact CTH for an RMA# to ship back their product. Warranty on hardware is one year, and must have the original purchase order number to confirm the warranty. If item is no longer under warranty, a PO must accompany the product returned to CTH for repair.

Returns can be made up to 30 days after shipment of the order. All returns will be subject to a 35% restocking fee. The original PO must be provided before an ERA# will be issued.

Support Process:

Once a support call is logged, an email will be sent to the customer confirming the commercial or technical support issue. The case will then be assigned to our sales or engineering team. The assigned will then inform the customer that they can now contact them directly and refer to the open case number. If a customer contacts an engineer without a case number or with a closed case number, they will be redirected to the support desk to properly log the call.

The assigned will then work with the customer in order to come up with a solution.

Solving problems sometimes requires looking at the customer's application files and going back and forth a few times before the problem is resolved. Therefore, some answers will take longer to resolve.

Please Note:

CTH covers all Product Support problems. However, anything outside general product support will be evaluated at a cost. This can include specific application work or development. A PO# will then be required to continue.

Latest Software Versions

Motorola STS Programming Software - version 12.50 - [release notes](#)

Beijer Electronics Information Designer - version 1.50 - [release notes](#)

Siemens FactoryLink - version 8.01 - [release notes](#)

CTH FCE Driver- version 3.12 - [release notes](#)