



Link
the Link

1st Quarter
March 2008

FactoryLink 8.0[®] Training April 21 - 25, 2008 Calgary Alberta

Course Overview

During the FactoryLink 8.0 Training Course, students will be introduced to major FactoryLink modules and have the opportunity to practice using them during hands-on exercises. Students will learn the basics of implementing, customizing, and maintaining FactoryLink systems.

Cost

\$3600.00 per person + GST

Recommended Audiences

New or current FactoryLink users and application developers responsible for installing, configuring, maintaining and troubleshooting FactoryLink applications should attend this course. If further detail on advanced topics must be covered to meet your needs, consider having us put together a custom course for your company.

ACE3600 Training - Calgary March 25 - March 28, 2008

When: March 25 - 28, 2008
Time: 8:30am - 5:00pm
What: Motorola ACE Training Session
Cost: \$2900.00 + GST per person
Where: CTH Systems, Calgary
#130, 6807 Railway Street SE

Visit our website for complete
course outlines and to register.

www.cthsystems.com

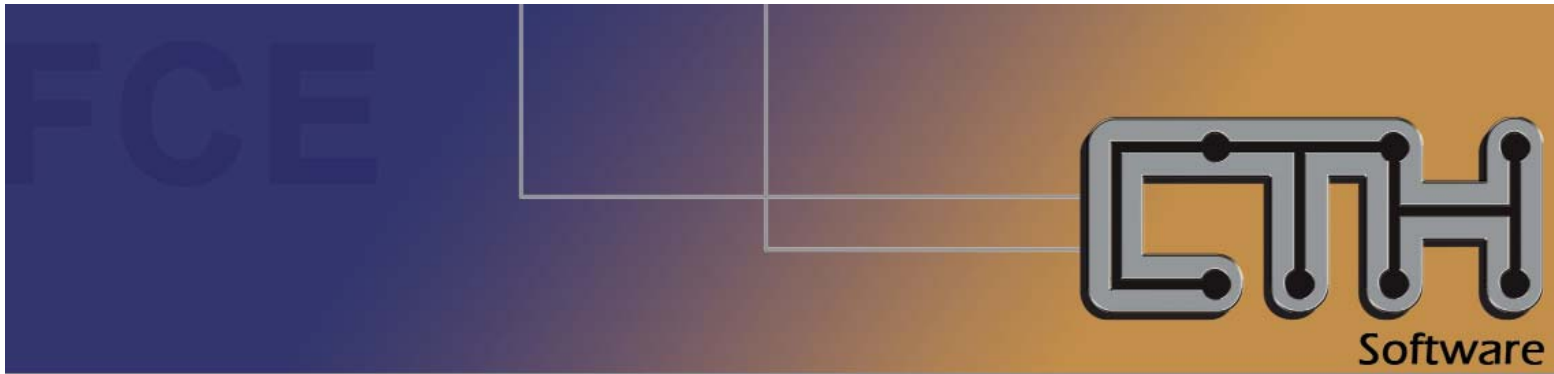
ACE3600 Training - Vancouver April 1 - April 4, 2008

When: April 1-4, 2008
Time: 8:30am - 5:00pm
What: Motorola ACE Training Session
Cost: \$2900.00 + GST per person
Where: Executive Inn, Burnaby
4201 Lougheed Hwy

Our website now contains the latest information on our products.
Please visit us to find out about the ACE3600, IP Gateway,
Siemens FactoryLink 8.0, Siemens Teamcenter,
and new Beijer Electronics Terminals.
www.cthsystems.com/manufacturers.html

Also in this issue...

FCE Driver - Tips and Tricks
Teamcenter - Knowledge Management
Global Petroleum Show 2008



FCE Driver v 3.04

Tips and Tricks

Upgrading Driver Version

Here are the steps suggested for upgrading FCE version:

- 1 Make a copy of fce.ini from C:\Program Files\Tecnomatix\FactoryLink\Server\BIN
- 2 Save a current copy of both server (*.mps) and client (*.cba) application.
- 3 Uninstall FCE driver from Control Panel/ Add or Remove Programs
- 4 Go to ftp://cthsystems.com
under CTH Tasks > P110 - FLeXS Communication Engine
Note: both FCE manual and release.txt can be found in this directory.
- 5 Install the latest FCE driver by double-left-click on the executable
- 6 Copy the old configurations from the backup fce.ini to new fce.ini file
(this step can be skipped if default settings are used in old fce.ini)
- 7 Restore both server (*.mps) and client (*.cba) application

Driver Debug

FCE has broken down to several different aspects for debugging purpose. The categories are: Configuration Error, Runtime Error, Serial Tx, Serial Rx, In/Out Bound TA, Encoder, Decoder, Schedules, Historical, Connection Messages, Socket Messages, Configuration Information, Tag Triggers, RBX Information, Memory/Index.

FactoryLink Tag

In the Configuration Explorer > application_name > FLeXS7

- FLeXS Communication Engine Scheduling and Historical Setup
- FLeXS Communication Engine – Historian Setup Information table, the most right column, *Debug Level, by default a tag named FCE_debuglevel is configured in this column.
Setting this tag value to -1 will turn all the debug categories on.

Microsoft DebugView.exe

The debug utility, DebugView, can be downloaded from the link below:

<http://technet.microsoft.com/en-us/sysinternals/bb896647.aspx>

Or

ftp://cthsystems.com/Utilities

Launch dbgview.exe and click on the Filter/Highlight (Ctrl+L) option in the menu shown below.

Enter FCE.* in the Include: field as shown in Figure 2 then click OK.

Setup the filter as such will only display FCE debug messages and filter out all the other messages from other processes.

Click on Edit > History Depth... Ctrl+H and set History Depth to 10,000. This will prevent DebugView consuming too much resource. And debug messages should display in the DebugView panel.

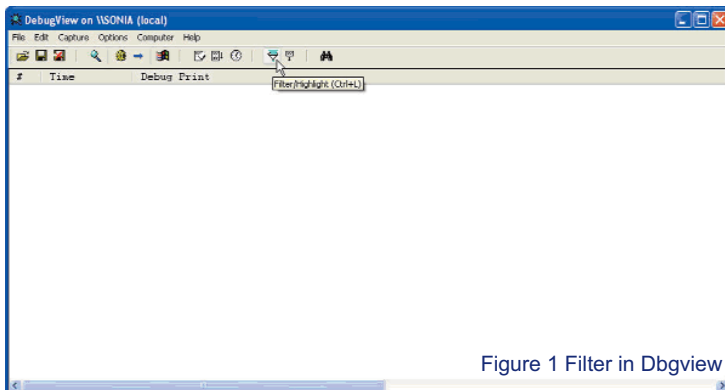


Figure 1 Filter in Dbgview

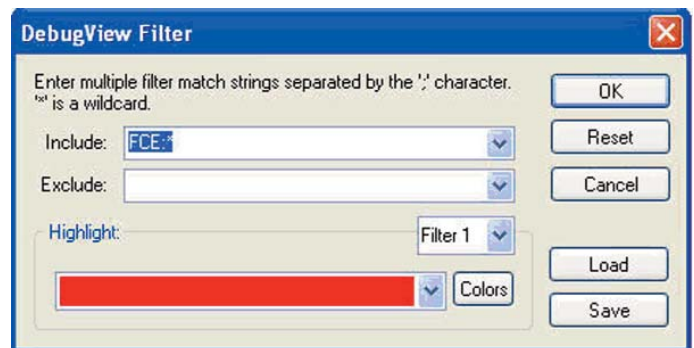


Figure 2 Filter in Dbgview

SIEMENS

Product Data Management or PDM is the activity of managing data and process workflow across a product's lifecycle. Related to the increase in the volume of data, is the desire to increase the value of the data. Increased knowledge is more valuable than just the information.

Teamcenter's Enterprise Knowledge Management capabilities let your Company bring its product, process, and service information into a single source of product knowledge. By capturing, integrating, and controlling this information in a single PDM environment, Teamcenter enables you to employ this knowledge in workflow-driven processes that automatically synchronizes the activities and builds relationships for that data cross-discipline teams, thereby making the data more valuable.

BAE Systems, a principal partner in development of the F-35 Joint Strike Fighter project, uses Teamcenter to share their knowledge with several other partners around the world.

Teamcenter provides the following enterprise knowledge management capabilities;

Data Management - Enables control of your process information.

Document Management - Organize records, classify information and implement retention and disposition policies.

Content Management - Links technical publications and engineering design groups by enabling them to share information and re-use product content while automating processes common to both domains.

Change Management - Allows for best practice, standards-based change processes for planning, controlling, executing and tracking product and process changes.

Process Automation and Orchestration - Allows for definition and standardization of workflow-in-process that can be used across multiple program platforms.

Product Structure and configuration Management - Allows for co-ordination of work-in-process, establish context usage and synchronizes multiple process hierarchies.

The benefits to your Company are;

- coordinate processes across multiple disciplines
- ensure that your team can access the right information
- provide secure global access to your product and process knowledge on an anywhere, any time basis
- integrate systems-of-choice and their related data into your Product Lifecycle Management (PLM) environment, thereby enabling best in class suppliers to work in your value chain

